

The Sophos WS1000 web appliance – part of Sophos Web Security and Control – allows organizations to identify and stop viruses, spyware and malware from entering a corporate network, create and enforce acceptable use policies and ensure that sensitive data is not inadvertently sent outside of the company.

Complete security and control at the gateway

The WS1000 web appliance is a secure web gateway solution that provides integrated protection against malware and unwanted web content. It is built on a robust hardware platform that delivers high-capacity, high-availability security with unrivaled simplicity and control. Staying ahead of the rapid evolution of threats, the WS1000 keeps networks free of web-based threats and helps maintain network performance and employee productivity.

- Safer browsing with full threat protection.
- Simple enforcement of internet use policies.
- Seamless user experience.
- Eliminates administrative complexity.
- Ideal for small to mid-size enterprises.

Faster, better protection from modern web threats

The WS1000 protects the web gateway from modern web attacks which are highly mobile, change rapidly and employ sophisticated methods of infection that traditional URL-based web filtering techniques cannot defend against.

- The WS1000 provides bi-directional traffic inspection filtering of requests and responses for malicious content, unwanted applications and usage compliance.
- Sophos Genotype® Protection is tuned to detect variants, families and large categories of malware. It uses pre-execution scanning to determine the functionality of code, and the behavior it is likely to exhibit, all without allowing the code to run.



The security and control you require

Key benefits

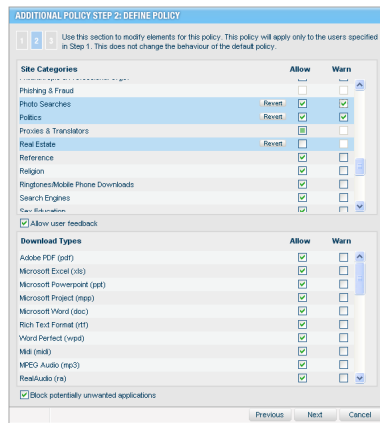
- » Inspects and secures web traffic against spyware, viruses, adware and other potentially unwanted applications
- » Offers bi-directional traffic inspection of both requests and responses for malicious content, unwanted applications and acceptable use compliance
- » Guarantees accurate detection with low system impact and negligible latency
- » Provides productivity filtering against 54 categories that sort websites according to their content
- » Supplies group policy management of the web gateway with visual indicators and reports
- » Keeps internal IP addresses invisible with an onboard proxy
- » Updates automatically with the latest protection from SophosLabs™, a global network of threat analysis centers
- » Provides at-a-glance views of system performance via a web-based dashboard
- » Simplifies administration with a “3 clicks to anywhere” management console
- » Offers a unique managed appliance that provides over 50 onboard monitors to verify that hardware, software, traffic and updates are all operating to required standards
- » Includes 24x7x365 support for the duration of the license and one-to-one assistance

- The WS1000 is powered by SophosLabs which proactively scans billions of web pages a day and identifies more than 29,000 new sources of malware and over 15,000 new phishing sites each week. New threat definitions and malicious URLs are automatically downloaded to the appliance, ensuring the most up-to-date protection available.

Comprehensive policy management and control

The easy-to-use web-based management console delivers insight and control over all systems via a single dashboard. Policies, Active Directory and FTP setup are simple thanks to a wizard-driven configuration interface.

- A comprehensive URL classification database provides filtering against 54 specific categories covering over 3.9 billion pages in 200 languages.
- Powerful policy authoring tools enable organizations to protect themselves against productivity, legal and bandwidth risks.
- Time-based policies enable administrators to define web browsing policies based on the time of day. For instance, organizations may wish to offer less restrictive browsing for their employees during lunchtime and after work.
- The WS1000 blocks downloads of potentially unwanted applications, including dialers, remote administration tools and system monitors. It also allows control over file types such as executables, streaming media, and ActiveX controls.



The wizard interface ensures easy policy management

Easy-to-use and set up

The web-based console allows intuitive “3 clicks to anywhere” navigation, The dashboard, point-and-click policy customization and relevant, actionable reporting enables swift web security and control management. Administrators can view 13 key reports including:

- Users attempting to download viruses.
- Users attempting to visit high risk sites.
- Users attempting to download potentially unwanted applications (PUAs).
- The top policy violators within an organization.

The web-based console provides 13 key reports:

Traffic and performance

- » Volume
- » Latency
- » Throughput

Users

- » Virus downloaders
- » PUA downloaders
- » High risk site visitors
- » Policy violators
- » Top bandwidth users

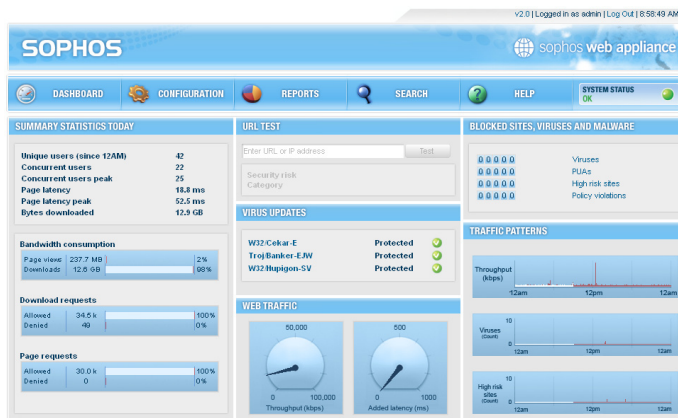
Policy and content

- » Sites
- » Categories
- » Downloads
- » Blocked sites
- » Suspect machines

Reducing administrative burden

The WS1000 is a managed appliance that has over 50 onboard monitors which verify that hardware, software, traffic and updates are all operating to required standards. In the event of an exception, Sophos will contact customers directly.

- Receives automatic updates and protection from Sophos.
- Manages onboard disk space automatically to optimize storage and performance.
- Provides visual indicators within the management console and sends email alerts.



Dashboard provides easy access to information you need

Purpose-built appliance

- Award-winning scanning technology delivers complete protection against all web-based threats.
- One single engine provides faster scans, low latency and simple updates.
- Simple policy enforcement means less time managing gateway security.
- Onboard secure cache.

Scanning technologies

Bi-directional traffic inspection filtering of both requests and responses for malicious content, unwanted applications and acceptable usage compliance.

- HTTP traffic and FTP via HTTP is scanned according to established policy.
- Traffic using forged or invalid HTTPS certificates is blocked.

Proactive protection

Genotype technology blocks suspicious code before it executes. Unlike runtime solutions, Sophos behavioral rule sets are constantly validated against an extensive library of legitimate applications, minimizing the risk of false positives.

- All outbound requests for web content are channeled through a built-in proxy,

The WS1000 filters web content against 54 specific categories:

- » Adult/Sexually explicit
- » Advertisements and pop-ups
- » Alcohol and tobacco
- » Arts
- » Blogs and forums
- » Business
- » Chat
- » Computing and internet
- » Criminal activity
- » Downloads
- » Education
- » Entertainment
- » Fashion and beauty
- » Finance and investment
- » Food and dining
- » Gambling
- » Games
- » Government
- » Hacking
- » Health and medicine
- » Hobbies and recreation
- » Hosting sites
- » Illegal drugs
- » Infrastructure
- » Intimate apparel and swimwear
- » Intolerance and hate
- » Job Search and career development
- » Kid's sites
- » Motor vehicles
- » News
- » Peer-to-peer
- » Personals and dating
- » Philanthropic and professional bodies
- » Phishing and fraud
- » Photo searches
- » Politics
- » Proxies and translators
- » Real estate
- » Reference
- » Religion
- » Ring tones/mobile phone downloads
- » Search engines
- » Sex education
- » Shopping
- » Society and culture
- » Spam URLs
- » Sports
- » Spyware
- » Streaming media
- » Tasteless and offensive
- » Travel
- » Violence
- » Weapons
- » Web-based email

An additional category, 'custom', can be used to control access for Intranets and other customer-specific sites.

URL categorization database

- URL database provides 54 specific categories.
- Coverage of over 24 million sites and 3.9 billion web pages.
- One list provides coverage against legal liability, confidentiality and privacy, asset protection and productivity issues.
- International web content covers 70 languages and 150 countries.
- Customers receive updates which provide over 250,000 list changes daily.
- Automated database optimization provides constant culling and aging of sites for high performance filtering.

Management console

- Web-based console with point-and-click customization and powerful dashboard enable the simplified management of security policy.
- Visual indicators and reports provide actionable information on security, suspect computers and content filtering performance.

Managed appliance

- Receives automatic protection updates from Sophos.
- Provides visual alerts within the management console and sends email alerts.
- Allows remote “heartbeat” monitoring by Sophos to check connection status.

Languages supported

- End-user interface: English, French, German, Spanish and Italian.
- Management console: English.

Industry-leading expertise 24/7

- Our 24/7 customer support operation is highly acclaimed, while SophosLabs, our global network of threat analysis centers, provides a rapid response to emerging and evolving threats.

To find out more about the WS1000 web appliance, visit www.sophos.com/products

Specification

Software

- » Sophos bi-directional traffic scanning engine
- » URL filtering against 54 content categories
- » Management console and dashboard
- » System alerting and notification
- » Active Directory integration
- » Hardened Linux operating system optimized for Sophos software

Hardware

Processor

- » Intel dual-core processor

Memory

- » 4 GB

Transactions per second

- » Continuous operation 125 tps
- » Peak operation 400 tps

Hard drive

- » Two 160 GB SATA, 7,500 rpm

Power supply

- » 260 W, 100-240 V

Installation

- » 1U rack mounted

Regulatory/safety certification

- » UL, CE, FCC, VCCI, C-Tick, TÜV-GS, SABS, RoHS, WEEE

Hardware warranty

- » Up to 3-year advance replacement (subject to valid software licensing)

Certifications

- » CIPA compliance, Network Testing Labs Award

ds/071221

Sophos enables enterprises worldwide to secure and control their IT infrastructure. Our network access control, endpoint, web and email solutions simplify security to provide integrated defenses against malware, spyware, intrusions, unwanted applications, spam, policy abuse, data leakage and compliance drift. With over 20 years of experience, we protect over 100 million users in nearly 150 countries with our reliably engineered security solutions and services. Recognized for our high level of customer satisfaction, we have an enviable history of industry awards, reviews and certifications. Sophos is headquartered in Boston, MA and Oxford, UK.

SOPHOS INC North America Toll free 1 866 866 2802 Email nasales@sophos.com www.sophos.com

Boston, USA • Mainz, Germany • Milan, Italy • Oxford, UK • Paris, France
Singapore • Sydney, Australia • Vancouver, Canada • Yokohama, Japan

© Copyright 2007. Sophos. All rights reserved. All trademarks are the property of their respective owners.

SOPHOS
secured.